

GMRS Radios For The Neighborhood

Tested in Orchard Creek since 2014.

Beginning Oct 2015 capability expanded
to the rest of Almaden Valley.



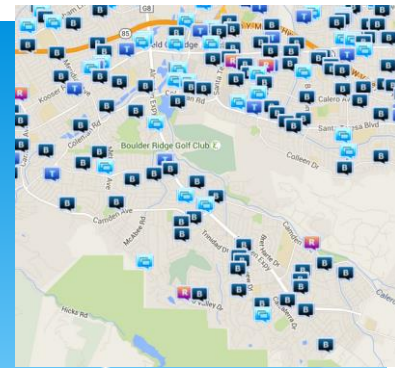
Agenda

October 2015

- Triggering Event
- Solution
- Typical Scenarios
- What's Next?



Triggering Event



SJPD response time typically >> 30 minutes. Needed a faster neighborhood response mechanism.

- Increase in burglaries around Almaden
- SJPD response slower than mean time to commit the crime
- Need a neighborhood response however challenges
 - Identifying neighbors willing to help
 - Efficient mechanism to contact each other
 - Poor results with off the existing solutions
 - Email
 - Text Messaging
 - Apps (e.g. Zello)
 - Walkie Talkie

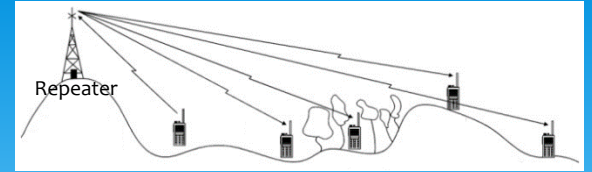
Good start
but not fast
enough

Calcaterra Court – C1

Family Name	House#	Street	Home Phone
Morales	1100	Calcaterra Court	408-527-3770
Reyes	1102	Calcaterra Court	408-527-3447
Gracia	1104	Calcaterra Court	408-527-4276
Alvarez	1106	Calcaterra Court	408-527-2463
Nguyen	1108	Calcaterra Court	408-527-4555
Lee	1110	Calcaterra Court	408-527-4523
Nguyen	1112	Calcaterra Court	408-527-3430
Nguyen	1114	Calcaterra Court	408-527-3430
Chavez	1116	Calcaterra Court	408-527-4790
Lee	1118	Calcaterra Court	408-527-7062
Langston	1120	Calcaterra Court	408-527-7052
Lee	1122	Calcaterra Court	408-527-2127
Nguyen	1124	Calcaterra Court	408-527-7052
Nguyen	1126	Calcaterra Court	408-527-7052
Schmitt	1128	Calcaterra Court	408-527-7052
Schmitt	1130	Calcaterra Court	408-527-7052



Solution




- GMRS Repeater
- 2 Watt programmable GMRS Radios
- Radios Powered On 24x7
- Radio Net Protocol
 - Net Control
 - Trained Users
- Practice, practice, practice
 - Responding to scenarios
 - Drill on potential scenarios



Tips provided to improve home safety and how to prepared for an emergency



Typical Scenarios



Late night
knocking on
back door!

NEIGHBORHOOD WATCH

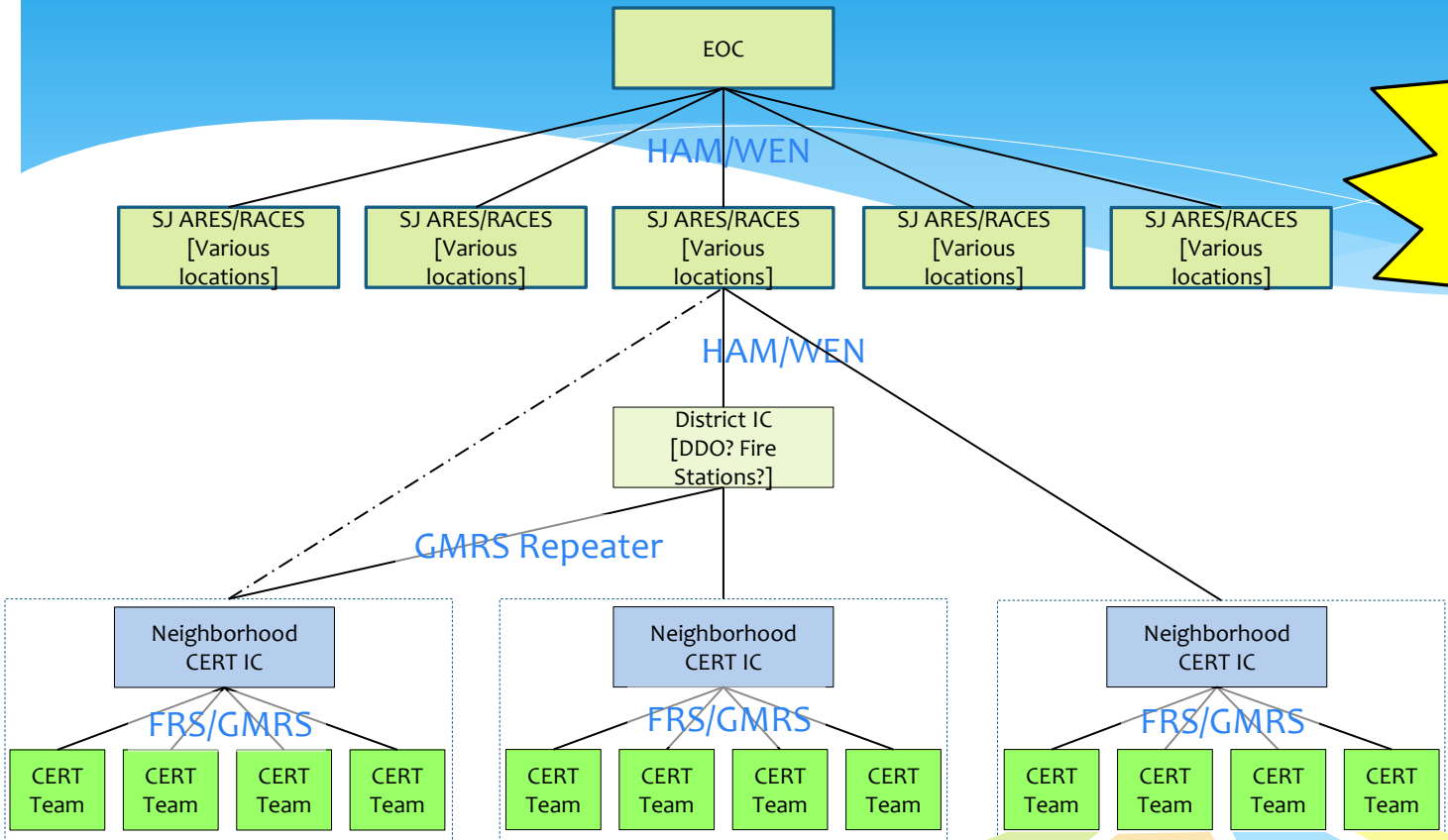
- Stranger at the door
- Suspicious car casing the neighborhood
- Observing a crime in progress (burglary, break in)
- Virtually following persons or cars -- by radio from the safety of your home
- Coordinating a neighborhood response
- Informing homeowner of car lights, open doors, etc
- Reporting burned out street lights

EMERGENCY RESPONSE

- Area wide disaster (earthquake, fire, flood)
- Coordinating CERT operational teams (medical, fire suppression, SAR)
- Dispatching task force teams (evacuate handicapped, help with gas valve)



Neighborhood CERT Communications to SJ ARES/RACES



Practicing Skills Locally To Improve Neighborhood Resilience



Tactical Channels Assigned To Operational Teams



What's Next?

NEIGHBORHOOD WATCH

1. Expand radios to more households across Almaden
2. Signage
3. Coordinate Neighborhood watch schedules
4. Video Wireless MESH network

EMERGENCY RESPONSE

1. Coordinate with San Jose OES
2. Prepare neighborhoods:
 - * Work with home owners on emergency preparedness supplies
 - * Train more neighbors on CERT
 - * Marshall funds for CERT trailer & supplies
 - * Continue to conduct CERT drills



Need Help?

- Contact Us

- Website

- <http://almadenneighborhoodwatch.com/>

- Jon Kim

- 408-320-7245

- jon@kimresidence.com

- Barry Redding

- 408-623-0021

- bdredding@gmail.com

